

Avallon / Quarré-les-Tombes

The Grande Traversée du Massif Central by mountain bike



The Grande Traversée du Massif Central (GTMC) mountain bike route begins at Avallon, at the northern end of the Parc du Morvan, in central Burgundy. Explore Avallon's historic centre, then descend on your mountain bike, via steep terraced gardens, to follow the Cousin upstream, cycling along its wild, steep-sided valley. Continuing south through hedge-divided fields, you reach the Lac du Crescent, one of the six 'great lakes' of the Morvan Range. After the dam at L'Huis Raquin, enjoy a detour of under 5km (there and back) to admire the imposing Château de Chastellux, dating back to the 11th century. This stage offers a solid introduction to the granite range of the Morvan Hills!

The route

Leaving Avallon, riding high, the GTMC, along the first third of this stage, takes you speeding down some fine singletracks. Then roll merrily along towards Crescent Dam, across a plateau marked by a patchwork of fields and hedges. Next, continue on a particularly pleasant stretch through light woods. The terrain can get slippery when wet, slowing you down. The shifts in altitude mean you have to tackle a few rises out of the saddle, before coming to an undulating part that's fairly easy. This first stage offers you a good warm-up. It would prove that much easier on an electric-assisted mountain bike!

Départ
Avallon

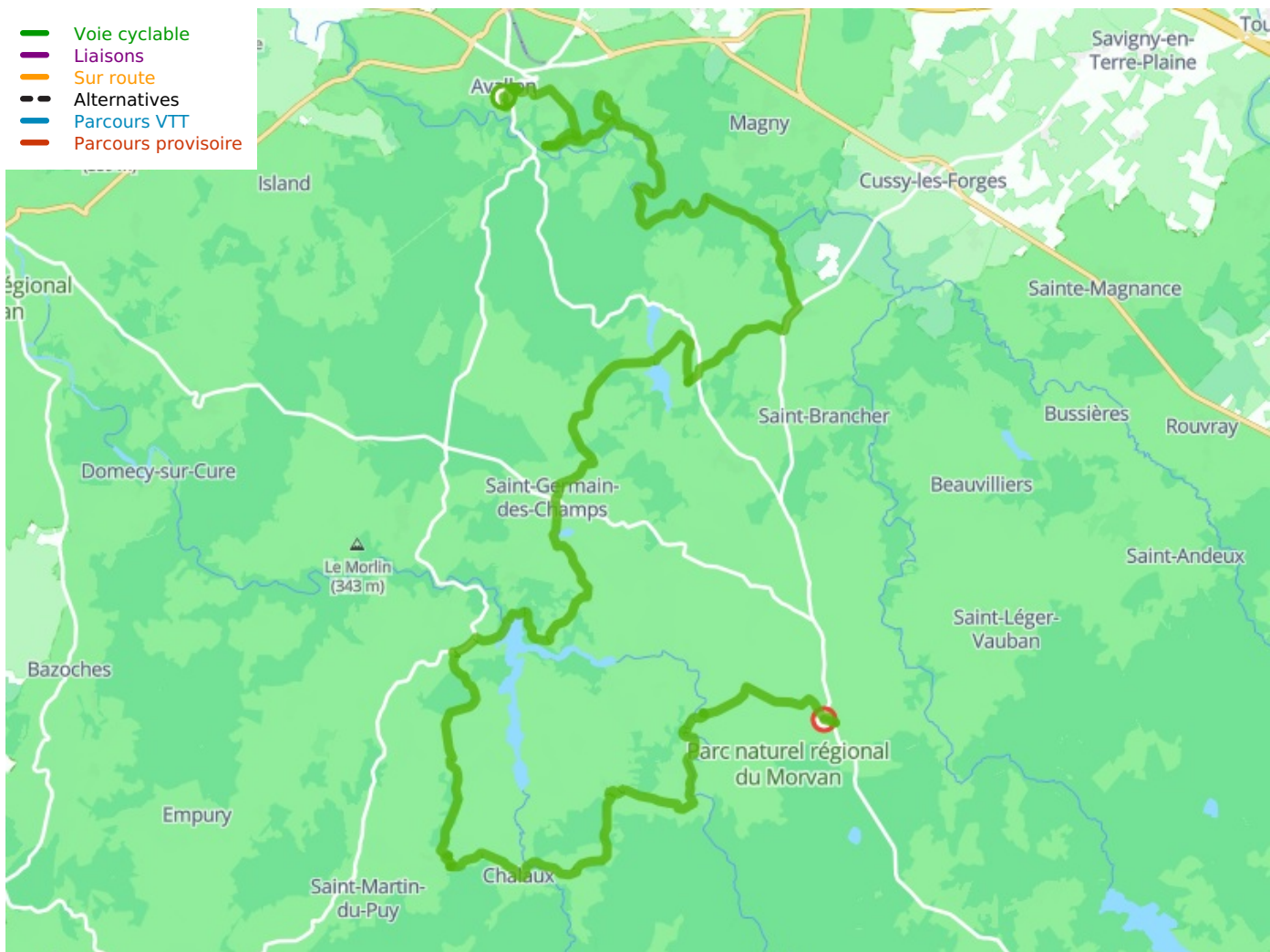
Arrivée
Quarré-les-Tombes

Durée
5 h 30 min

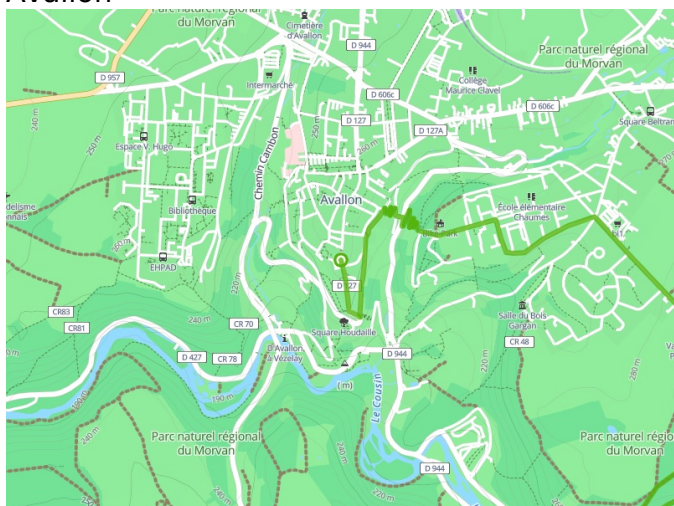
Distance
51,71 Km

Niveau
Hard

Thématique
Forest, Natural parc,
Cultural heritage



Départ Avallon



Arrivée Quarré-les-Tombes

